



# KATHLEEN McMUSING

Kathleen McCormick

KathleenMcMusing.com



I Love to Quilt Block (Stitches)  
by  
Kathleen Scargle McCormick  
for the  
Partners in Design  
2019 Sew Let's Quilt Along



This pattern is designed to have fun with making stitches in a block for our sewing themed QAL. I did this for my own logo and there are a few ways you can get to it. I also have a font page at the end with the entire alphabet in case you would like to use a different phrase.

You can make your stitches one of two ways:

Method 1: Piece the stitches (pages 2-4)

Method 2: Fuse the stitches (pages 5-6)

## Fabric Requirements

Background	24" x 12"
Letters	10" x 10"
Thread	10" x 7"
Outside Border	9" X 15"
Corner stones	4" X 4"
Fusible web	12" x 12"

# Method 1: Piecing the Stitches Patches

## Cutting

**Hint:** Use starch on fabric to help with keeping narrow strips straight as you sew.

<b>Background:</b>	1	8-1/2" square
	6	3/4" x 10" strips
<b>Inner Border</b>	2	1" x 9" strips
<b>(background)</b>	2	1" x 10" strips
<b>Thread Fabric:</b>	6	1" x 10" strips
<b>Border Fabric:</b>	4	2" x 10"
<b>Cornerstone Fabric:</b>	4	2" squares

## Make the Center Block with Letters

1. Print the letters, checking **PRINT TO SIZE** on your printer.
2. Check that the 1" box is 1" square after printing.
3. Place paper under fusible. Trace each piece onto fusible web.
4. Cut each piece, **leaving some extra around each piece** (so fusible will secure the raw edges).
5. Fuse to fabric **according to your fusible instructions**.
6. Cut out the letters on the line.
7. Position on the background in a pleasing arrangement, or use block print out as guide.

**Hint:** Use parchment paper or teflon sheet to protect iron and ironing board.

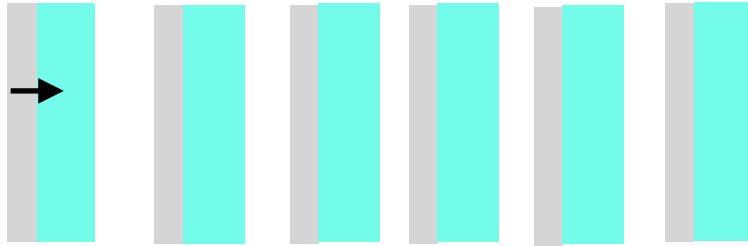


8. Secure edges as desired either using a machine stitch (small straight, zig zag or blanket stitch) or hand embroider.

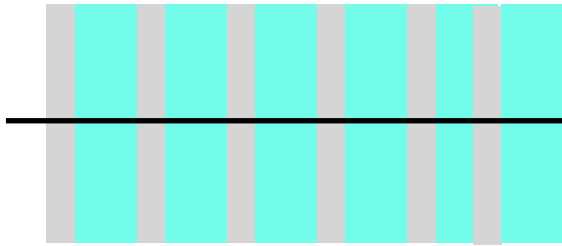
## Make the Stitches Patches

1. Sew six (6) 3/4"x10" background and six (6) 1" x 10" thread fabric together. Make 6 pairs.
2. Press seam towards thread fabric

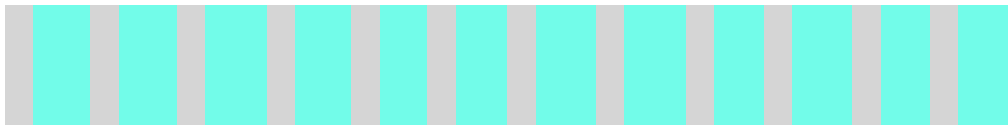
Press seam  
towards  
thread  
fabric



3. Sew all six pairs together (roughly 5"x10" piece).
4. Cut the piece in half yielding 2 pieces about 5"x 5".



5. Sew the two pieces together yielding a piece about 5" x 9 1/2"



6. Cut four (4) 3/4" x 9 1/2" strips to make the stitches patches. Set aside.

## Attaching the Stitches Patches & Borders

1. First, place 2 stitch patches across the center square. Find a pleasing start and stop.  
**HINT:** The thread patch is a little stretchy. This may allow you to remove the final patch on each side.
2. Trim 2 stitch patches to 8 1/2". Attach to top and bottom. Press toward center.



3. Place remaining 2 strips on square in a pleasing fashion.

4. Trim 2 stitch patches to 9". Attach to the sides. Press toward center



5. Attach 2 9" inner border strips to top & bottom sides. Press toward inner border strips.



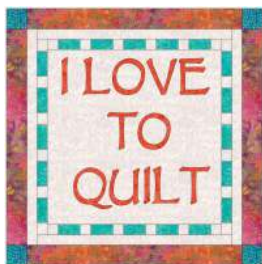
6. Attach 2 10" inner border strips to opposite sides. Press toward inner border strips.



7. Attach 2 10" border strips to top/bottom. Press toward border strips.



8. Attach 2 cornerstone squares to each end of 10" strips. Press toward border strips.  
9. Attach two (2) 12-1/2" border strips with cornerstones to remaining sides. Press toward border strips.  
10. If necessary, trim to 12 1/2"



## Method 2 Fused Stitches

### Cutting

**Hint:** Use starch on fabric to help with keeping narrow strips straight as you sew.

<b>Background:</b>	1	8 1/2" square
	2	1-1/4" x 8.5"
	2	1-1/4" x 10"
<b>Thread Fabric:</b>	1	4 x 10"
<b>Border Fabric:</b>	4	2" x 10"
<b>Cornerstone Fabric:</b>	4	2" squares
<b>Fusible Web:</b>		12" x 12"

### Make the Center

1. Print the letters, checking **PRINT TO SIZE** on your printer.
2. Check that the 1" box is 1" square after printing.
3. Place paper under fusible. Trace each piece onto fusible web.
4. Cut each piece, **leaving some extra around each piece** (so fusible will secure the raw edges).
5. Fuse to fabric **according to your fusible instructions**.
6. Cut out the pieces on the line.
7. Position on the background in a pleasing arrangement, or use block print out as guide.



**Hint:** Parchment paper or teflon sheet to protect iron and ironing pad

8. Secure edges as desired either using a machine stitch (small straight, zig zag or blanket stitch) or hand embroider.

### Make the Stitches Patches

1. Fuse a 5" x 10" piece of fusible to thread fabric **according to your fusible instructions**.
2. Cut into 4 1/4" x 10" strips.  
**Hint:** I used Heat'NBond and peel paper off now.
3. Cut strips into 1/2" long pieces - be sure to lay with fusible side down.

4. Press carefully to background.
5. Finish edges as desired, either straight stitch, zig zag or blanket stitch around each piece.

**Hint:** I just did one long horizontal line on each side and left the short sides unsewn.



## Attaching the Stitches Patches and Borders

1. First, place 2 short stitches patches on the center square. Find a pleasing start and stop.
2. Trim 2 stitches patches to 8 1/2". Sew to top and bottom. Press towards center.



3. Place remaining 2 stitches patches on center square. Find a pleasing start and stop.
4. Sew 2 10" stitches patches to the sides. Press towards center.



5. Attach 2 10" border strips to top and bottom sides. Press towards border fabric.



6. Attach cornerstones to 2 remaining 10" strips. Press towards border fabric.
7. Attach the 12 1/2" border strips with cornerstones to remaining sides. Press towards border strips.
8. Trim to 12 1/2"

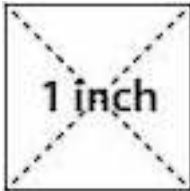


Letter Template

E V O L I

Q O T U

T L I



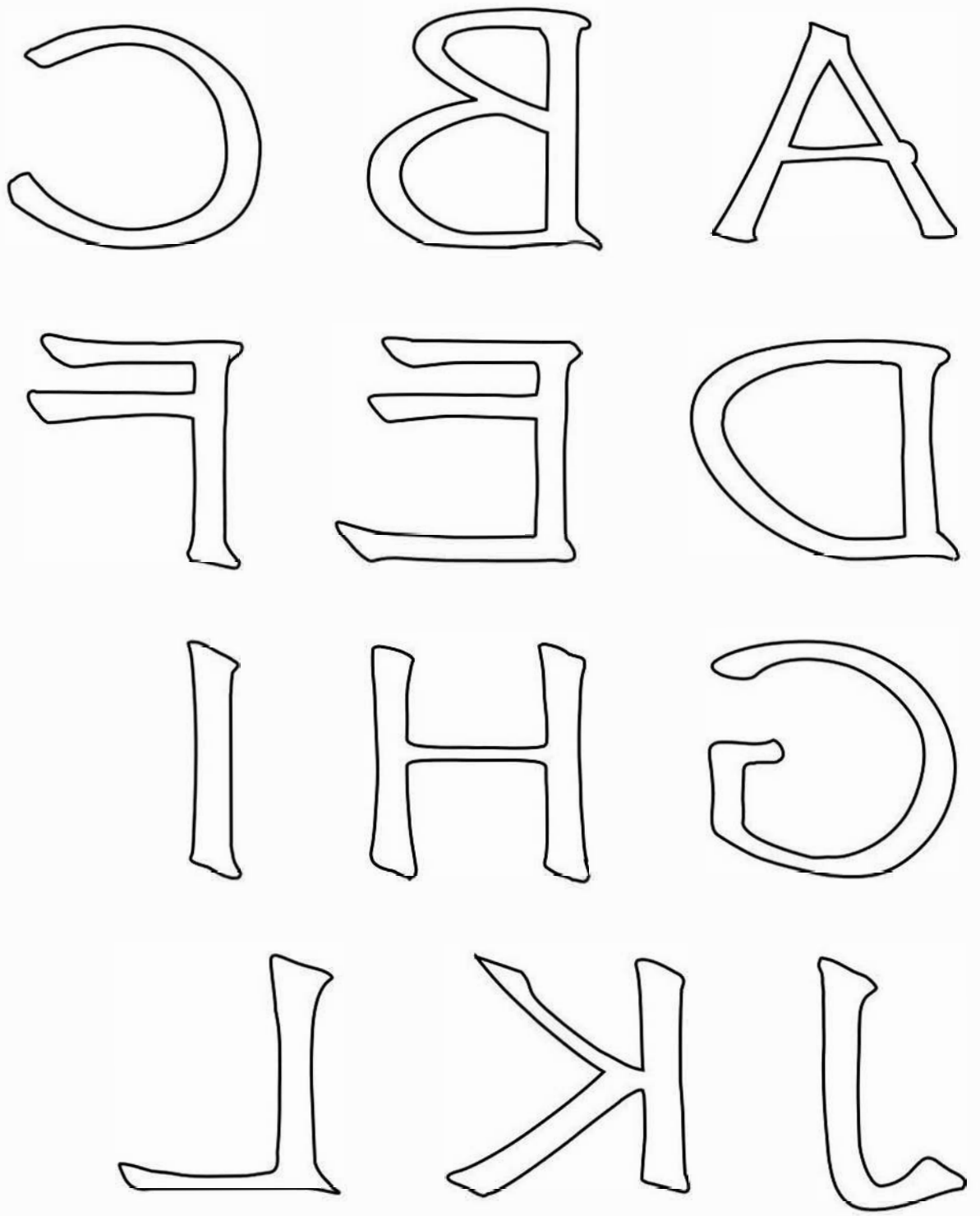
I LOVE

TO

QUILT

1 Inch





O N M

R Q P

U T S

X W V

Z Y